

ACADEMIC EXCELLENCE

Live and

In a decade that Monol has thrived in providing English language courses, the academy has gained more than enough experience to learn the studying habits, capacities, and culture of its students. With additional research, it was able to form and create course materials, which are specific to a diversifying student demographic. Further, each course has its own unique methodology, framework, and approach but is, all the same, geared towards a more comfortable use of the English language and global competence.

Comprehensive Curriculums

> The concept of the Spiraling Framework and Communicative Approach applied in the curriculum

- ✓ **Retention and repetition of concepts with gradually expanding vocabulary & lesson**
The frequency of topic delivery and discussion on all proficiency levels, along with the addition of new concepts, contributes to the refinement and sharpening of students' abilities.
- ✓ **Adaptation of theme-based lessons**
Through theme-based lessons, students learn the appropriate language and communication expressions for real life situations and are given venues for more practice and feedback from teachers.

Competent Teachers

> Training system that ranges from general to specific courses and subjects

- ✓ **Expansion of teacher trainings**
There are six (6) stages of Monol's training program, which encompasses basic and advanced ESL teaching strategies as well as in-depth understanding of the various curriculums offered.
- ✓ **Ensuring quality teaching through regular evaluation**
The need to assess and evaluate the competencies of each teacher is present in all stages of the training program. Through validation examinations, teaching strategies as well as the teachers' training needs are evaluated to assure consistency in delivery and facilitation of classes.

Free Optional Classes

> Up to 3 hours, 30 minutes of free optional classes

- | | | |
|--|--|---|
| ✓ Morning Class
Time: 06:30 - 07:00
Warm-up lessons in pronunciation and idioms | ✓ Grammar Class
Time: 17:00 - 18:00
Main areas of English grammar and sentence patterns | ✓ Night Class
Time: 19:00 - 21:00
IELTS Speaking
TOEIC Speaking (Select one)
Job Interview |
|--|--|---|



Learn

DIVERSE ACTIVITIES

Since Monol believes that learning happens inside and outside the classroom; the academy assures every student that in every lesson they learn and in every new place they explore, there are various ways of enjoying and appreciating the experience.



> Utilization of the student penalty fund through snack parties

> Essay writing competitions (organized regularly every other term)

> Sports tournaments (basketball, billiards, table tennis, etc)

On-Campus



> Community immersion programs in local schools

> Feeding programs in local day care centers and orphanage visits

> Weekend trips: Surfing, island hopping, hiking, and sightseeing activities

Off-Campus



> GYM / for body building exercises, boxing, mixed martial arts (15:00 - 24:00, weekdays)

> YOGA, PILATES / for better flexibility and posture (17:00 - 21:00, weekdays)

> GOLF / for better grip, swing and posture (17:00 - 21:00, weekdays)

Free Fitness Programs

※ All facilities are open from 06:00-24:00; free lessons are according to instructors' schedule

COMFORTABLE AND HOMELY LIVING

To support a well-balanced school life, Monol ensures that the essential and basic services in the academy are sustained and further improved. By providing these with the best quality, students are assured of a convenient and comfortable stay during their study program and focus solely on their academics.



DELUXE ROOM FOR 2



Toilet



Shower Room



Wardrobe closets



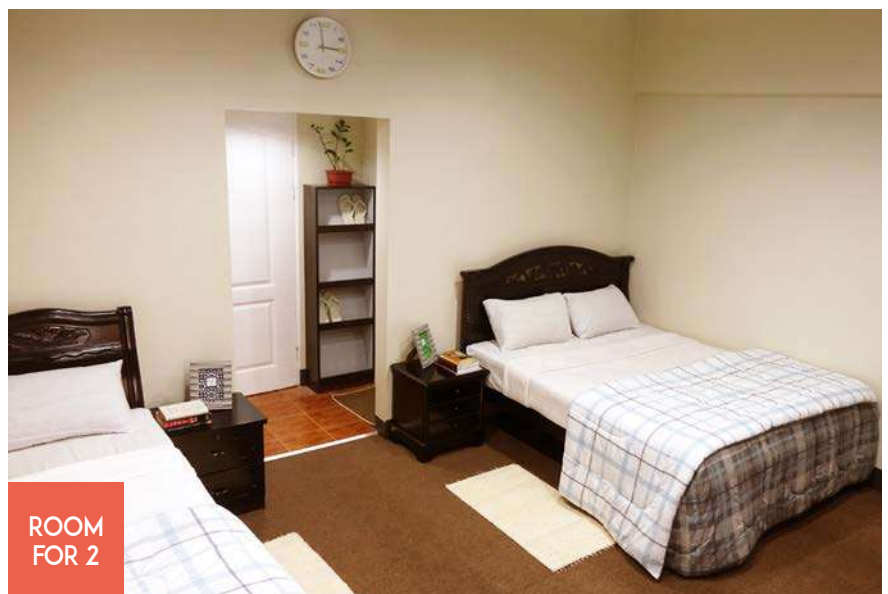
Refrigerator, Dehumidifier



CCTV



ROOM FOR 3



ROOM FOR 2



3+1 /
ROOM
FOR 4



- ✓ Fire prevention mechanisms
- ✓ Wi-Fi access points are installed in all floors
- ✓ Unlimited requests for housekeeping and laundry services
- ✓ Sturdy and lockable wardrobe closets and drawers
- ✓ Spacious study areas to improve concentration
- ✓ Clothes hangers, laundry baskets, study lamps, etc.



SEMI
ROOM
FOR 1



cameras



Wi-Fi access points



Fire alarms, sprinklers



ROOM
FOR 6



COMFORTABLE AND HOMELY LIVING

FACILITIES AND SERVICES FOR COMFORT



Gym



Yoga and Pilates room



Table Tennis



Basketball court



Yoga room - treadmill for females



Billiards



Sauna



Relaxation Room



Golf Driving Range



Coffee shop



AVR



Laundry services



Housekeeping services

HEALTHY AND SECURE CAMPUS



24/7 SECURITY



MEDICAL ASSISTANCE



GENERATOR ON STANDBY



SAFE DRINKING WATER



FIRE-SAFE BUILDING



COMPLETE and BALANCED MEALS

STUDENT SATISFACTION GUARANTEES

> ONE WEEK EXPERIMENTAL STUDY PROGRAM

Monol has launched its One-week Experimental Study Program to open more opportunities for students to seek the right academic environment. In this program, the academy will give you one week to experience the courses and services of Monol for free and if during this week, the academy fails to satisfy your needs, we will never hold you back to explore other academies. Regardless of the reason or factors for your dissatisfaction, we will refund your tuition and accommodation fees in full, excluding the \$100 registration fee and the money transfer fees.

> EASY FEES PAYMENT SCHEME

Most language schools require students to pay all fees at one time. However, it is a fact that not all students are capable of settling fees this way. As a consideration to those who have financial constraints, Monol has developed an easy payment scheme, which allows students to pay for their tuition and other fees every month.

> 100% REFUND

During any student's study program, unforeseen or unprecedented circumstances may occur that would leave no choice for him/her but to cancel. Most of the time, another problem arises because of the inability of academies to give a refund in full. To avoid giving this burden to the students, Monol is committed to returning 100% of the students' tuition and accommodation fees with the exception of the registration fee of \$100 and the money transfer fees.

> FLEXIBLE AND DIVERSIFIED LEARNING OPTIONS

Any student would like to have a balanced school life. If not, it will be very easy for him/her to get burnt out physically and mentally. To give everyone an enriched learning experience in the Philippines, Monol offers various extra-curricular programs related to sports and fitness and provides facilities and equipment to support them. Further, students are given opportunities to customize their curriculum by adding or converting class setups to match their study habits and styles as well as to better maximize their learning.



REGULAR SPEAKING ESL

Regular Speaking ESL focuses on the improvement of a student's skills in listening, speaking, reading, and writing, as well as in grammar and pronunciation. It has two (2) proficiency levels: Foundational ESL and Essential ESL, which define the abilities of students to comprehend, express and communicate using the language. Each sublevel of Foundational and Essential ESL are designed for eight (8) weeks but may be shortened through LEVEL UP examinations done every four (4) weeks.

Level	Foundational ESL				Essential ESL					
	Elementary		Advanced		Elementary		Intermediate		Advanced	
	TERM I	TERM II	TERM I	TERM II	TERM I	TERM II	TERM I	TERM II	TERM I	TERM II
Class hours	Up to 10hrs, 30min of classes (1:4 classes can be converted to 1:1; 1:1 classes can be added)									
1:1 subjects (3 hours)	Listening (2H) Reading (1H)									
1:4 subjects (4 hours)	Speaking (2H) Writing (1H) Pronunciation (1H)									
IELTS Band score	2.0		3.0		4.0		5.0		6.0	

* Students without classmates will take five hours 1:1. (Listening, Reading, Speaking / Listening, Reading, Writing, Pronunciation)

ONE-ON-ONE ESL

One-on-one ESL is a course that focuses on individualized learning and instruction. It ensures high quality interaction between the student and the teacher in class by opening more opportunities to the learner to ask questions and practice skills. In this course, the teacher can adapt to the student's communication style as well as provide the learner more feedback and assure better understanding of his/her needs.

Level	Foundational ESL				Essential ESL					
	Elementary		Advanced		Elementary		Intermediate		Advanced	
	TERM I	TERM II	TERM I	TERM II	TERM I	TERM II	TERM I	TERM II	TERM I	TERM II
Class hours	Up to 8hrs, 30min of classes (1:1 classes can be added)									
1:1 Core subjects (3 hours)	Listening (2H) Reading (1H)									
1:1 Elective subjects (2 hours)	<div> <div>Speaking (2H) Pronunciation + Writing (2H)</div> <div>Choose one subject only</div> </div>									
IELTS Band score	2.0		3.0		4.0		5.0		6.0	

GROUP ESL

Group ESL is a derivation from the Regular Speaking ESL course. Despite its lack of one-on-one core subjects, the course focuses on training students be more confident in communicating in English with fellow learners through classroom discussions as well as with meaningful and interactive activities innate in all group class subjects.

Level	Foundational ESL				Essential ESL					
	Elementary		Advanced		Elementary		Intermediate		Advanced	
	TERM I	TERM II	TERM I	TERM II	TERM I	TERM II	TERM I	TERM II	TERM I	TERM II
Class hours	Up to 7hrs, 30min of classes (1:1 classes can be added)									
1:4 subjects (4 hours)	Speaking (2H) Writing (1H) Pronunciation (1H)									
IELTS Band score	2.0		3.0		4.0		5.0		6.0	

REGULAR IELTS

The IELTS course is offered to students who plan to study or work abroad and aims to train students towards the goal of achieving a high Band Score in either the British Council or IDP Australia IELTS exams. Using both the General Training and Academic Module, this program provides Introductory and Proper courses that are composed of Lecture and Practice subjects with an addition of 1:1 Elective Practice subjects.

No entry level requirement ※ **Recommended requirement:**

Complete the Intermediate level of Regular Speaking ESL/One-on-one ESL

Level	Introduction to IELTS	IELTS Proper			
	4.5	5.0	5.5	6.0	6.5
Class hours	Up to 10hrs, 30min of classes (1:4 classes can be converted to 1:1; 1:1 classes can be added)				
1:1 subjects (3 hours)	Speaking Lecture (1H) Elective Practice (2H)	Speaking Practice (1H) Elective Practice (2H)			
1:4 subjects (4 hours)	Reading Lecture (1H) Listening Lecture (1H) Writing Task 1 Lecture (1H) Writing Task 2 Lecture (1H)	Reading Practice(1H) Listening Practice(1H) Writing Task 1 Practice (1H) Writing Task 2 Practice (1H)			
Optional classes (3 hours, 30 min)	Morning Class (6:30 - 7:00) Grammar Class (17:00 - 18:00) Night Class (19:00 - 21:00)				

* Students who start on a regular term will have 7 class hours a day (1:1 3 hours, Group 4 hours). 5 hours 1:1 classes are offered to those who start on an irregular schedule.

IELTS has a lecture course that introduces all the basics of the IELTS testing format while the practice course prepares and trains students through exercises and applications.

Test simulations/Mock exams are conducted every Friday as an evaluation of the students' improvement.

GUARANTEE SCORE PROGRAM

Guarantee Score	5.5 band score from 4.0	6.0 band score from 5.0	6.5 band score from 6.0	7.0 band score from 6.5
Requirements	- 3 months old 4.0 official band score / 4.0 score on Monol's qualifying exam	- 3 months old 5.0 official band score / 5.0 score on Monol's qualifying exam	- 3 months old 6.0 official band score / 6.0 score on Monol's qualifying exam	- 3 months old 6.5 official band score
Duration	12 weeks			
Advantages	- One (1) official test sponsored by the academy - Failure to achieve target band score entails FREE tuition			
Conditions	<ul style="list-style-type: none"> • 95% class attendance • 95% homework accomplished • 95% attendance in mock exams conducted every term • Take the official test on the 10th week of the program 			

Business English

Business English is a specialized course of learning that is related to the language used in business and professional careers. It offers three (3) courses: Pre-employment, Post-employment and Flight Attendant Training, which have varying modules and approaches that are essential in building charisma and confidence alongside effective communication skills.

No entry level requirement ※ **Recommended requirement:**

Complete the Intermediate level of Regular Speaking ESL/One-on-one ESL

Pre-Employment

The Pre-Employment course aims to prepare students for job opportunities, particularly on interviews. Subjects under this program focus on the improvement of students' skills in writing and listening in relation to business vocabularies, at the same time; teach students how to create a good impression to future employers.

LEVEL	TERM I	TERM II
Class hours	Up to 8hrs, 30min of classes (1:1 classes can be added)	
1:1 subjects (5 hours)	Cover Letter and Resume Writing (1H) Company Background Research (1H) Standard Job Interview 1 (1H) Group Discussion Interview 1 (1H) Presentation Interview 1 (1H)	Essay Writing (1H) Career Planning (1H) Standard Job Interview 1 (1H) Group Discussion Interview 1 (1H) Presentation Interview 1 (1H)
Optional classes (3 hours, 30 min)	Morning Class (6:30 - 7:00) Grammar Class (17:00 - 18:00) Night Class (19:00 - 21:00)	

Post Employment

The Post Employment course improves not only the students' English skills in writing and reading but also boosts their self-confidence. It also serves as their training ground for business presentations and advertising campaigns as well as effective communication within workplaces.

Level	TERM I	TERM II
Class hours	Up to 8hrs, 30min of classes (1:1 classes can be added)	
1:1 subjects (5 hours)	Business Correspondence (1H) Business Reading 1(1H) Business Presentation and Plan (1H) Business Communication 1 (2H)	Reports, Newsletters, Press Releases, and Blogging (1H) Business Reading 2 (1H) Marketing and Advertising Campaign (1H) Business Communication 2 (2H)

Flight Attendant Training

This program is offered to students who wish to enter a career as a flight attendant. Apart from improving communication skills, this program also equips students with abilities that are relevant to the duties of a flight attendant and trains them on how to efficiently execute these.

Level	TERM I	TERM II
Class hours	Up to 8hrs, 30min of classes (1:1 classes can be added)	
1:1 subjects (5 hours)	FA Listening 1 (1H) FA Writing 1 (1H) FA English 1 (1H) FA Interview 1 (1H) FA Group Discussion 1 (1H)	FA Listening 2 (1H) FA Writing 2 (1H) FA English 2 (1H) FA Interview 2 (1H) FA Group Discussion 2 (1H)

TOEIC

The TOEIC course is comprised of two (2) sections - Listening and Reading Comprehensions and is designed for a 16-week study program. The course provides in-depth lectures and practices to equip students with strategies on how to achieve a high TOEIC score and to provide venues for the enhancement of communication skills needed in an international environment.

No entry level requirement ※ **Recommended requirement:**

Complete the Elementary level of Regular Speaking ESL/One-on-one ESL

LEVEL	Introduction to TOEIC		TOEIC Practice	
	TERM I	TERM II	TERM I	TERM II
	The Lecture course consists primarily of lessons covering the different parts of the TOEIC test as well as the strategies and approaches to properly respond to questions.		The Practice course is exclusively composed of practice subjects in preparation of the actual TOEIC listening and reading comprehension tests.	
Class hours	Up to 8hrs, 30min of classes (1:1 classes can be added)			
1:1 subjects	Listening 1 - Photographs (1H) Listening 2 - Question-Response (1H) Listening 3 & 4 - Conversations (3) & Talks (4) (1H) Reading 5 & 6 - Incomplete Sentences (5) & Text Completion (6) (1H) Reading 7 - Reading Comprehension (1H)		Listening 1 - Photographs (1H) Listening 2 - Question-Response (1H) Reading 5 & 6 - Incomplete Sentences (5) & Text Completion (6) (1H) Listening 3 & 4 - Conversations (3) & Talks (4) (1H) Reading 7 - Reading Comprehension (1H)	
Optional classes (3 hours, 30 min)	Morning Class (6:30 - 7:00) Grammar Class (17:00 - 18:00) Night Class (19:00 - 21:00)			
TOEIC score	500	600	700	800

※ The corresponding TOEIC score is measured after the completion of each term

※ Optional classes are offered to all students regardless of course.

FREE OPTIONAL CLASSES

Classes/Lessons		Description
Morning Class		This class covers topics on general pronunciation and grammar, which serve as a warm-up activity for students.
Grammar Class		This subject provides comprehensive instruction in the main areas of English grammar as well as the standard patterns of English sentences. It is conducted based on the current level of students.
Night Class	TOEIC Speaking	These classes are considered as an alternative for weekday self-study. Classes offered provide supplementary lessons on IELTS Speaking, TOEIC Speaking, or English Job Interview.
	IELTS Speaking	
	Job Interview	
Fitness Program	Gym	Body-building exercises, weight training, boxing (15:00 - 24:00, weekdays)
	Yoga / Pilates	Meditation, flexibility and posture enhancement exercises (17:00 - 21:00, weekdays)
	Golf	Proper grip and swing lessons, posture correction (17:00 - 21:00, weekdays)

Special Programs

FAMILIES PROGRAM

The Families Program is designed for parents and their children with a course of study that is identical to the regular student. Through this program, every member of the family becomes a learner and each are also given opportunities to experience diversified curricular and extra-curricular programs offered by the academy. (Children over 7 years old are qualified for this program. Guardians of the children may or may not be their parents and may have the option to forego their classes.)

Level	Foundational ESL				Essential ESL					
	Elementary		Advanced		Elementary		Intermediate		Advanced	
	TERM I	TERM II	TERM I	TERM II	TERM I	TERM II	TERM I	TERM II	TERM I	TERM II
Class hours	Up to 10hrs, 30min of classes (1:4 classes can be converted to 1:1; 1:1 classes can be added) * Minimum number of group class members is 2									
1:1 subjects (3HRS)	Listening (2H), Reading (1H)									
1:4 subjects (4HRS)	Speaking (2H), Writing (1H), Pronunciation (1H)									
Optional classes (3 hours, 30 min)	Morning Class (6:30 - 7:00), Grammar Class (17:00 - 18:00), Night Class (19:00 - 21:00)									
Extra-curricular (optional) (4 hours)	Fitness Program (17:00 - 21:00) Golf / Yoga&Pilates / Weight Training / Boxing									
Features	<ol style="list-style-type: none"> 1. The family can transfer classes among members. 2. Family members live together at the dormitories. 3. Family members can join the regular class schedules depending on level. Otherwise, students will be given 5 hours 1:1 classes. 4. Children are not allowed to go out of the academy unaccompanied. 5. The families can join organized weekend activities in and around Baguio City with a fee. 									

LEAP ENGLISH "Take charge of your learning and excel faster!"

LEARNER-FOCUSED. EXCLUSIVE. ACCELERATED ENGLISH COMPETENCY. PREMIUM PROGRAM.

LEAP ENGLISH is tailored to meet the specific needs and abilities of each student in achieving English language competence. Through the collaboration of highly-qualified and experienced teachers and the learners, the creation of a personalized curriculum is accomplished based on the interests, available time and learning goals of the student. Through a customized curriculum, the students will likely be more engaged in classroom activities with the ability to learn at their own pace and with endless opportunities to explore even deeper into the subjects, lessons, or fields that are of particular interest to them while advancing their English communication skills.



Class hours	1:1 subjects (5 hours), 1 hour consultation with mentor as part of student's progress assessment
Features	<ol style="list-style-type: none"> 1. Each student will have a mentor who will guide him/her in the creation of a syllabus, monitor the student's progress, and provide constant guidance during the course of the program 2. Each student should undergo a diagnostic test and in-depth needs assessment and learner profiling before getting admitted for the program. An assessment fee of \$100 is required for the diagnostic test. (Students who will choose the default subjects offered in Monol need not pay for the assessment fee.)

GROUP PICK-UP

✓ Flights that arrive between SAT 16:00 - 19:00 / 22:00 - 01:00
and SUN 05:00 - 08:00 / 16:00 - 19:00 / 22:00 - 01:00

✓ Twice a month every Saturdays - Sundays

※ Students who arrive earlier than the scheduled pick-up time are advised to wait until the pick-up team arrives at the designated terminals and waiting areas.

Pick-up schedule
Saturday - Sunday
every 2 weeks



Monol's group pick-up is a paid service scheduled on specific dates based on the start of the terms. This is applied for by the students in advance. All students who avail this service will travel to Baguio together.

2019 PICK-UP SCHEDULE					
JAN	5, 19	MAY	11, 25	SEP	14, 28
FEB	2, 16	JUN	8, 22	OCT	12, 26
MAR	2, 16, 30	JUL	6, 20	NOV	9, 23
APR	13, 27	AUG	3, 17, 31	DEC	7, 21
2020 PICK-UP SCHEDULE					
JAN	4, 18	MAY	9, 23	SEP	12, 26
FEB	1, 15, 29	JUN	6, 20	OCT	10, 24
MAR	14, 28	JUL	4, 18	NOV	7, 21
APR	11, 25	AUG	1, 15, 29	DEC	5, 19

※ Dates marked in red are the specified start of TERM A.

※ Schedule aside from the dates specified above can be accommodated: Students can request for personal pick-up (\$200) or travel to Baguio on their own.

✓ Monthly Schedule

Saturday	Sunday	Monday	Tuesday	Wednesday	Thursday	Friday
Group pick-up Self-study	City Tour for new students Self-study	1 Level test Orientation Revalidation test Penalty party	2	3	4	5 FREE FRIDAY
Weekend trip Self-study	Weekend trip Self-study	6	7	8	9	10 FREE FRIDAY
Group pick-up Self-study	City Tour for new students Self-study	11	12	13	14 Graduation meeting	15 FREE FRIDAY
Weekend trip Self-study	Weekend trip Self-study	16	17	18	19	20 Final exams Business English presentation FREE FRIDAY